

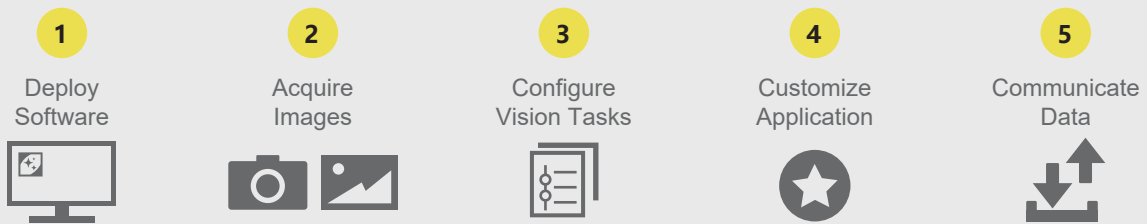
IntelliBlink™

IntelliBlink™ is a powerful visual inspection prototyping software, which makes it simple to address sophisticated vision applications. With a future-oriented design that users can flexibility combine various algorithm tools to meet needs. It helps users improve time and costs to market.

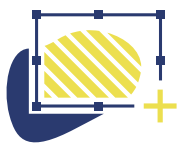
Our software offers users an excellent experience with secure efficiency and great quality. We also offer support and training in the entire product life cycle.



IntelliBlink™ Workflow



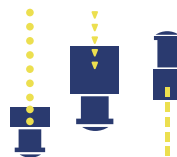
WYSIWYG



Drag-and-drop Interaction simplifies development difficulty.

[Learn more at Page 2](#)

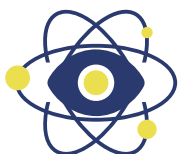
Powerful Hardware Compatibility



Support massive brand cameras and common communication protocols.

[Learn more at Page 2](#)

Abundant Vision Tools



Abundant tools offer solutions for challenging machine vision applications.

[Learn more at LPV](#)

Flexible Extension



IntelliBlink, LPV and IB-AI Tool can be used together to form a more flexible vision solution.

[Learn more at Page 2](#)

Convenient Calibration Tools



A variety of easy-to-operate calibration methods are closer to applications.

[Learn more at Page 2](#)

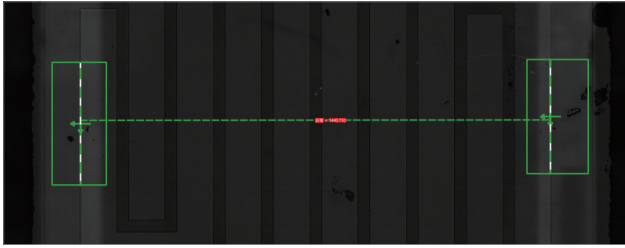
Comprehensive Applications



Focusing on multiple segments and providing one-stop solutions.

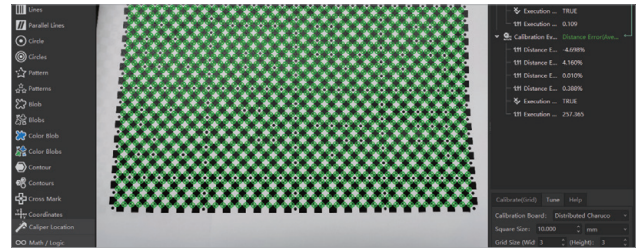
[Learn more at Page 2](#)

WYSIWYG



The results are displayed intuitively due to drag-and-drop Interaction with no prior programming experience required.

Convenient Calibration Tools

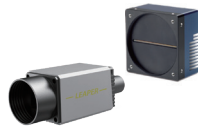


The calibration operation is more convenient through a built-in visual calibration window.

Powerful Hardware Compatibility



Support Ethernet port, USB and CameraLink capture card.



Support multi-brand area scan / line scan cameras.



Support multi-brand motion controllers.



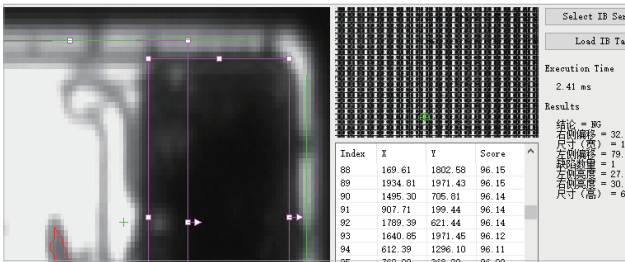
Support multi-brand I/O devices.



Support output of images, CSV files, etc.

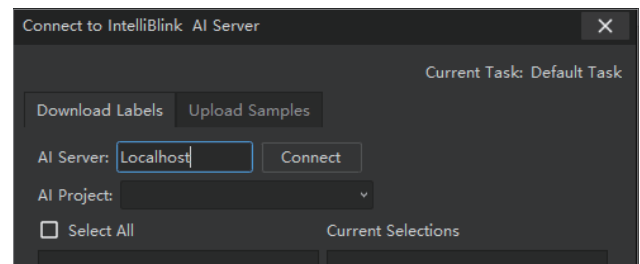
Flexible Extension

As a Driver



Leaper Vision Toolkit can directly invoke vision tasks developed on IntelliBlink™, significantly reducing the amount of code.

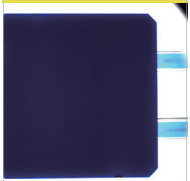
Connect to IntelliBlink AI Server



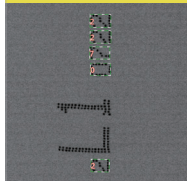
Data interconnection has been realized between IntelliBlink™ and IB-AI Tool.

Comprehensive Applications

Solar Photovoltaic



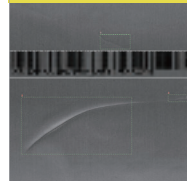
Film



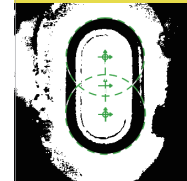
Semiconductor



Li-ion Battery



Laser



Intelligent Logistics



* Learn more at Leaper Manufacturing Applications.



Hangzhou Leaper Technology Co., Ltd.

Add.: Building 3, LinkPark, No.17, Binhe Road, Lin'an District, Hangzhou, Zhejiang, China

Tel.: +86 571-61109729 (8:30-17:30, UTC+08:00)

E-mail: leaper@hzleaper.com

Web(Co): <https://en.hzleaper.com>



Website



Bilibili